



Agilent 7696A Sample Prep WorkBench

LC • GC • LC/MS • GC/MS

Automate your most tedious sample preparation steps with **one standalone instrument**

The Measure of Confidence



Agilent Technologies

The NEW Agilent 7696A Sample Prep WorkBench

Gain confidence in your sample prep by:

- Decreasing sample carryover
- Minimizing variability between analysts
- Reducing the need for costly rework
- Lowering health and safety risks

Manual sample prep is time-consuming and inherently variable. Such inconsistency can lead to time-consuming rework, wasted supplies, and the lingering uncertainty that your samples are not prepared the way your protocols – or regulatory requirements – dictate. In addition, direct exposure to hazardous chemicals can jeopardize the health of you and your team.

Now Agilent has eased these frustrations with a *standalone* sample preparation instrument that is as *reliable* and *precise* as our GC and LC instruments.

The Agilent 7696A Sample Prep WorkBench automates tedious – and error prone – steps in your sample prep process. It is suitable for the most common HPLC, GC, LC/MS, and GC/MS applications.



Alleviate the unpredictability of manual sample preparation and standards development

Your results are only as reliable as your sample prep. That is why Agilent's 7696A Sample Prep WorkBench combines precise automation with an intuitive software interface to eliminate variability in dilution, extraction, standards addition, and other key steps. This versatile tool also significantly reduces exposure to hazardous solvents for greater long-term peace-of-mind.

All prepared samples are finished in 2 mL vials that are compatible with most GC and LC autosamplers – *regardless of manufacturer* – for direct analysis without transferring to other sample containers.

"Drag-and-drop" software simplifies your common sample prep steps

Unlike cumbersome sample prep robots, the 7696A Sample Prep WorkBench requires no complex programming and can run unattended for hours. Its user-friendly, templated software is easy to master, allowing you to concentrate on the *chemistry* – not the programming.

The *only* standalone sample prep workstation from a major chromatography leader

Agilent's 7696A Sample Prep WorkBench is backed by four decades of Agilent GC and LC expertise, so you know it will perform as reliably as our world-renowned analytical instruments. In addition, Agilent's top-rated service professionals understand your workflow, and are always ready to deliver the personalized support you need for maximum productivity.

Sophisticated automation to fit your unique applications

These versatile tools and capabilities ensure that your sample prep meets the standards of your high-quality workflow.



Dilution, aliquoting, and reconstitution



Reagent and standard addition



Spin-vortex mixing



Liquid/liquid extraction



Bar code reading



Flexible sample tray heating and Peltier cooling

To learn more about the Agilent 7696A Sample Prep WorkBench, visit www.agilent.com/chem/workbench

Jump start your workflow with the very latest automation technology

From small, specialized runs to high-volume studies, Agilent's 7696A Sample Prep WorkBench can help you process samples more consistently, so you can generate your best data right from the start. It features:

- The capacity to hold 150 2 mL vials
- Single-position heater (25 °C - 80 °C)
- Vortex mixing action
- Liquid handling towers for precise, reproducible dispensing and transfer
- The ability to simultaneously heat a single 50-vial tray (25 °C - 80 °C) and cool a *second* 50-vial tray (40 °C - 5 °C) through energy-efficient Peltier cooling

Dramatically decrease variability errors

One of the biggest drawbacks of manual sample prep is analyst-to-analyst variability, which can lead to questionable results and frequent costly rework. But Agilent's 7696A WorkBench virtually eliminates variability concerns – and confirms it with a written record of steps performed and resources used.

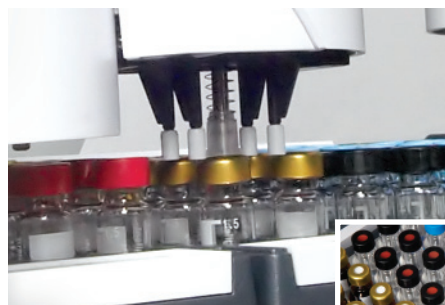


Save time and money, while protecting the environment

With Agilent's 7696A WorkBench, you can be confident that your samples are prepared correctly the *first* time – reducing the amount of wasted solvent, glassware, pipette tips, and reagents. The instrument's automation capabilities, along with its ability to fit under most fume hoods, also reduces lab workers' exposure to derivatizing reagents, acids, bases, and other hazardous chemicals.

Meet your sample prep challenges for virtually any analytical technique

The standalone 7696A WorkBench can be used for HPLC, GC, LC/MS, GC/MS sample prep – *regardless of system manufacturer*. It is also flexible enough to accommodate analytical techniques used in industries such as pharmaceutical, petrochemical, food safety, consumer products, forensics, and environmental.

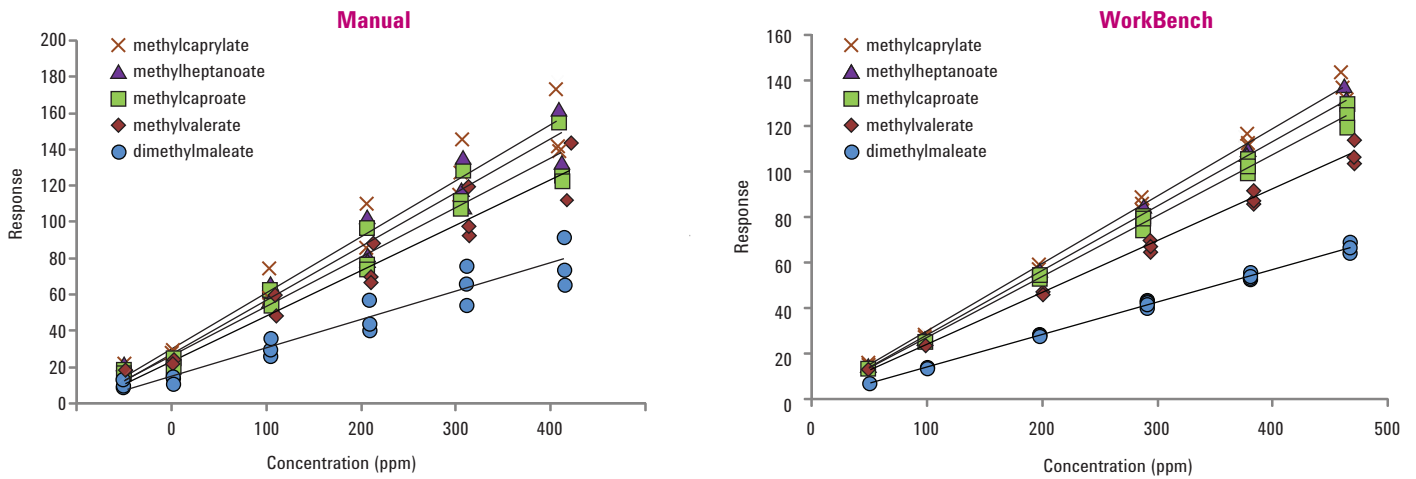


Genuine Agilent supplies ensure maximum sample prep consistency

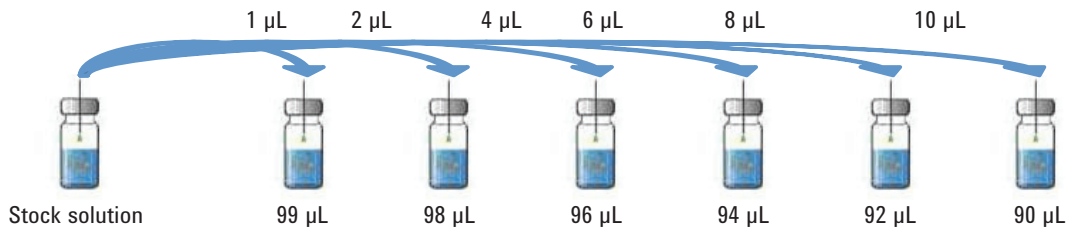
As the world's premier measurement company, Agilent can offer you the widest selection of both GC *and* LC vials, syringes, and other sample prep supplies. All are manufactured to our demanding specifications, tested under the strictest conditions, and backed by unmatched technical support – plus a 90-day warranty from the date of shipment.

Maintain sample prep consistency and reproducibility, day in and day out

Now, creating standards can be less of a chore. Here you see a side-by-side time comparison of calibration curves created manually and with Agilent's 7696A Sample Prep WorkBench. Note that the linearity of standards prepared by the 7696A WorkBench is as good – or better – than those prepared manually.



Linear dilution: calibration curve standard preparation. Calibration standard preparation with the 7696A WorkBench is consistently more reproducible than manual preparation.

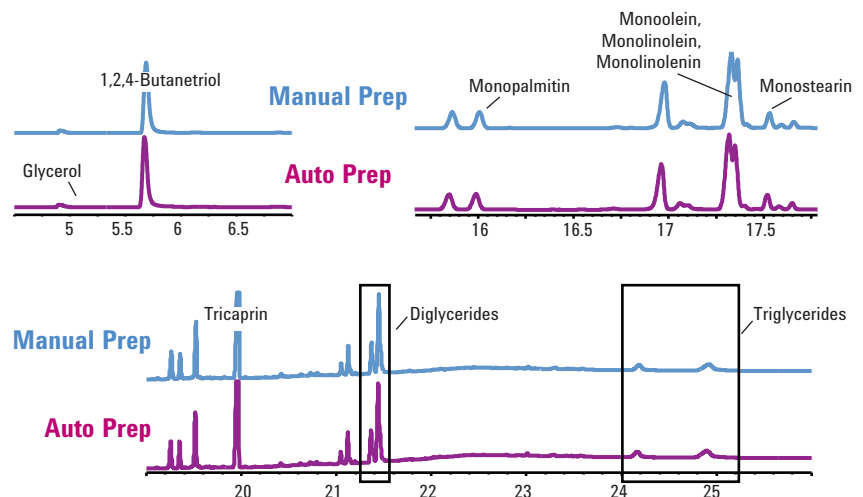


Analysis of glycerins in biodiesel.

In this example, the following steps were performed both manually and with Agilent's 7696A WorkBench:

1. Addition of ISTDs (butanetriol & tricaprin)
2. Derivatization with MSTFA
3. Reaction for 15 minutes
4. Quenching with n-heptane

The chromatograms highlight the outstanding precision and reliability of the 7696A WorkBench for free and total glycerins.



To learn more about the Agilent 7696A Sample Prep WorkBench, visit www.agilent.com/chem/workbench

Dedicated, intuitive software makes sample preparation as easy as 1-2-3

Agilent's 7696A WorkBench Software puts the power of automation at your fingertips. Using an intuitive, icon-driven interface, you can create customized sample prep routines in three simple steps.

1. Define your sample prep resources

The **Resource Manager Screen** makes it easy to designate and keep track of solvents, reagents, standards, empty vials, and other key supplies using a color-coded graphic interface. The software also monitors chemical supply levels and automatically prompts you when replenishment is needed.

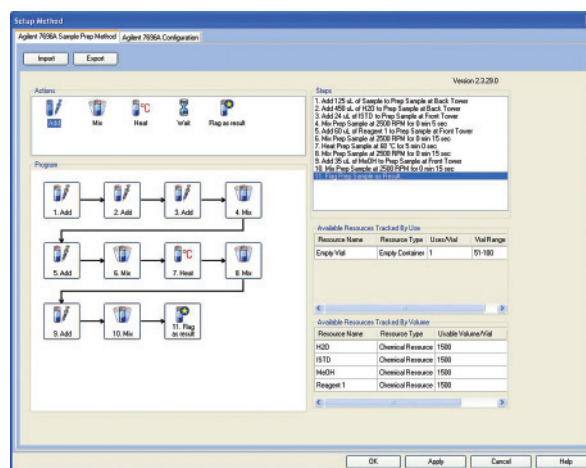
2. Create your method

The **WorkBench Software Method Editor Screen** lets you automate and sequence the most common sample prep tasks with drag-and-drop speed. Graphical and textual displays tell you at-a-glance which steps will be performed, and in what order. And method templates allow anyone – regardless of skill level – to develop sample prep methods with confidence.

3. Decide how many samples you want to prep

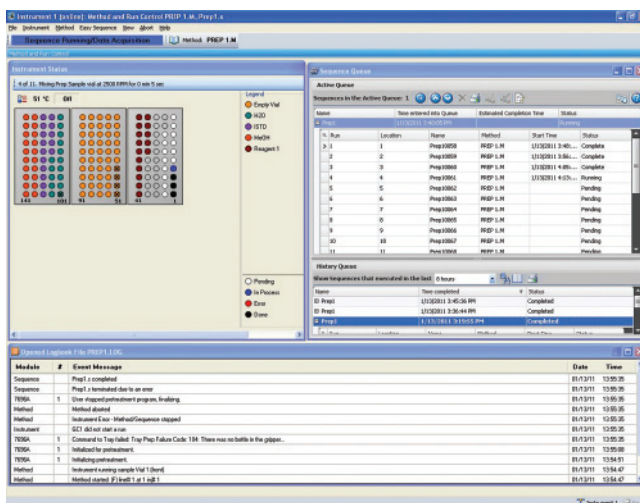
Once you have identified your sample prep resources and method steps, the **Easy Sequence Screen** allows you to specify how many samples you wish to prepare.

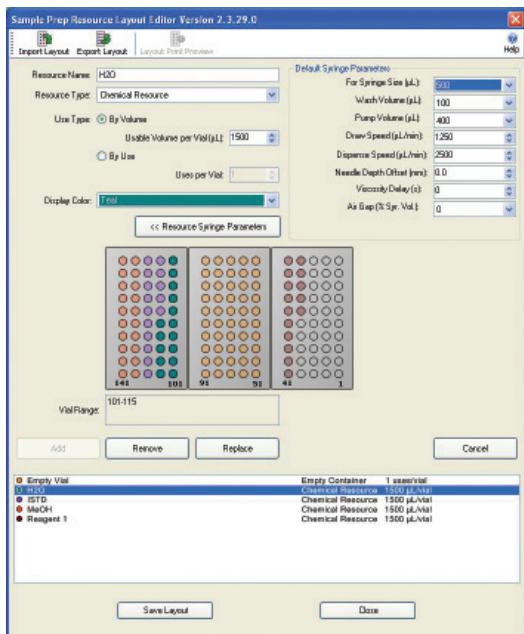
Sample tracking: The 7696A WorkBench generates a detailed report for each sample prepared. These reports document the date, time, instrument, and vial position, along with the steps performed and resource chemicals used – down to the vial number. An integrated bar code reader also confirms and verifies samples to ensure legal and regulatory compliance.



Drag-and-drop simplicity: With just a few mouse clicks, the WorkBench Software Method Editor Screen lets you synchronize key steps such as adding, mixing, heating, and waiting.

Advanced resource tracking and control: the WorkBench Software gives you precise control over individual drag-and-drop functions used in the Method Editor. In the “add” function, for example, you can specify parameters such as draw speed, dispense speed, needle height, number of washes, and solvents used during washes. Likewise, in the “mix” function, you can manage time, direction switching, and speed.





The 7696A WorkBench Software includes a color-coded **Resource Manager Screen** that lets you specify sample prep resources on trays and turrets, set default dispensing parameters, and keep track of supply levels based on volume or frequency of use.



Spend *more time* analyzing and *less time* worrying about instrument performance

Only Agilent offers a multi-layered commitment to keeping your laboratory running at maximum productivity.

- **Agilent Advantage Service and Support**

Whether you need support for a single instrument or a multi-lab, multi-vendor operation, Agilent helps you solve problems quickly, increase your uptime, and optimize your resources – from installation and upgrade to operation and repair.

- **Agilent Value Promise**

We *guarantee* you at least 10 years of instrument use from your date of purchase, or we will credit you with the residual value of the system toward an upgraded model.

- **Agilent Service Guarantee**

If your Agilent instrument requires service while covered by an Agilent service agreement, we guarantee repair or we will replace your instrument for free.



To learn more about the Agilent 7696A Sample Prep WorkBench, visit www.agilent.com/chem/workbench

The Agilent 7696A Sample Prep WorkBench is a **simply better** way to...

- Automate repetitive manual sample preparation steps
- Save money on glassware, solvents, reagents, and solvent disposal – without sacrificing precision and reproducibility
- Reduce the need for rework due to analyst-to-analyst variability
- Increase productivity and lower your cost per sample
- Minimize exposure to hazardous chemicals



For more information

To learn more about the Agilent 7696A Sample Prep WorkBench, visit us online at www.agilent.com/chem/workbench

In the U.S. and Canada, call toll free **1-800-227-9770**, option 3, then option 3 again

In other countries, please call your local Agilent Representative or Agilent Authorized Distributor – visit www.agilent.com/chem/contactus

This information is subject to change without notice.

© Agilent Technologies, Inc. 2011
Printed in the USA January 28, 2011
5990-6908EN



Agilent Technologies